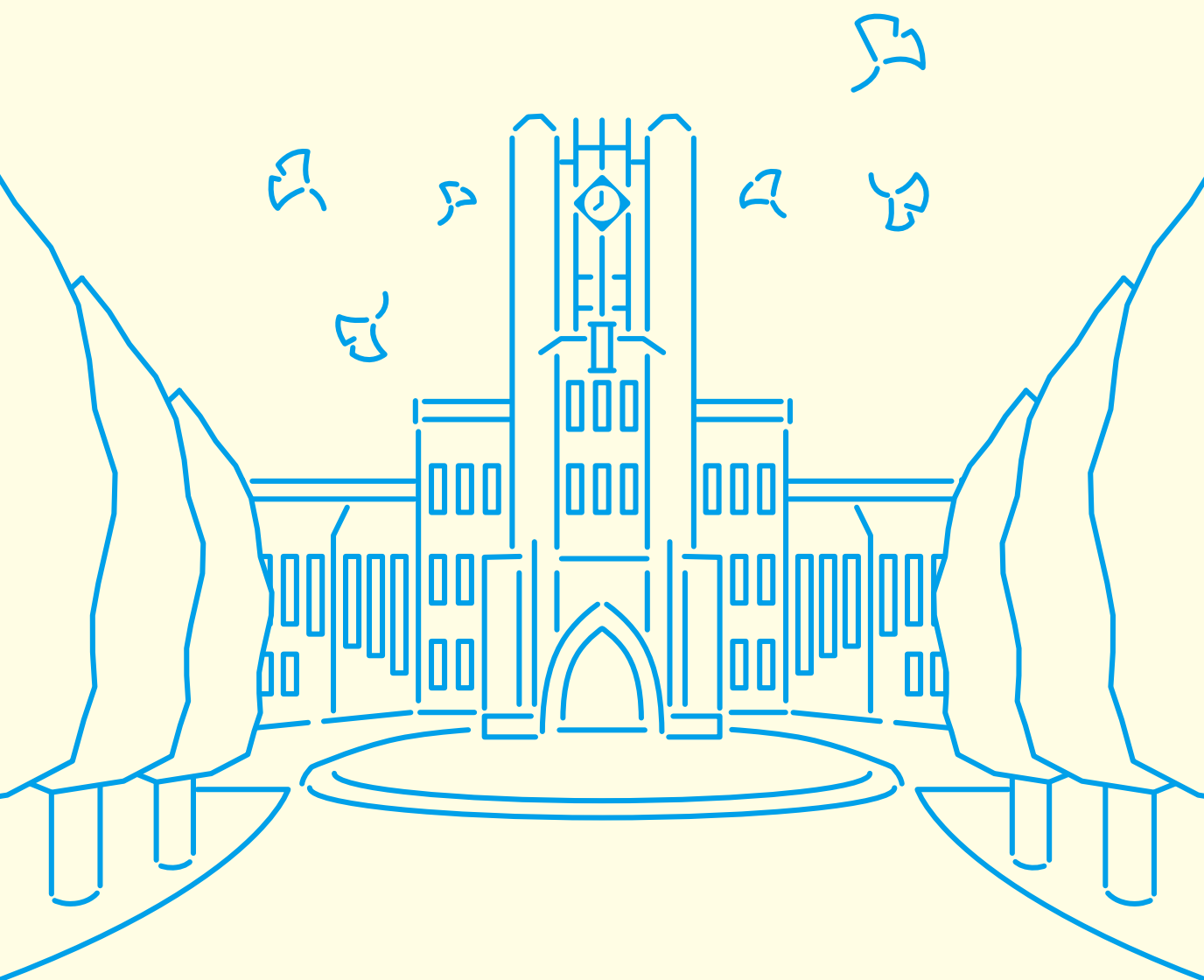


The University of Tokyo

Guide for International Applicants





The University of Tokyo offers a variety of options for international students, including enrollment in degree programs, exchange studies through partner universities, and participation in short-term programs such as summer programs. Many of these programs are conducted in English. We hope this booklet will give you an overview of what is available and help you find the program that best suits your goals.



Contents

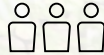
- 4** UTokyo at a Glance / Academic Calendar
Faculties and Graduate Schools
Campus Information
- 6** Undergraduate Degree Programs
Bachelor's/Master's Integrated Program
- 8** Graduate Degree Programs
- 12** Exchange Programs with Partner Universities
- 14** Short-term and Summer Programs
Research Students
- 16** Tuition
Scholarships
- 18** Student Life

UTokyo at a Glance

Founded
1877



Students
29,000+



International Students
5,000+



Faculty and Staff

11,000+



Exchange of Researchers

13,000+



Cited Papers

1,072,000+



International Exchange Agreements

570



Nobel Prize Winners

14



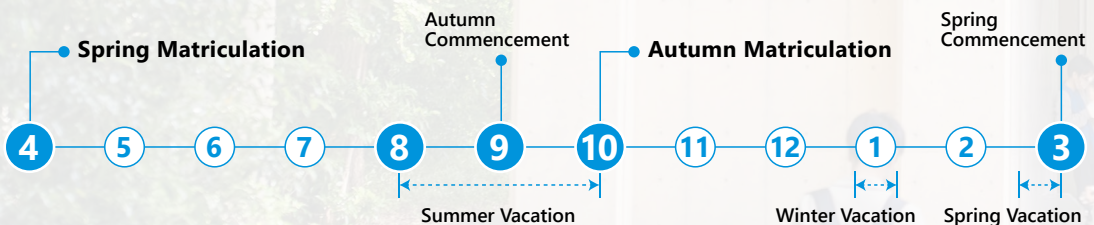
Astronauts

7



As of December 2025

Academic Calendar



■ Faculties and Graduate Schools

Undergraduate Programs

Law
Medicine
Engineering
Letters
Science **EN**

Agriculture
Economics
Arts and Sciences
Education
Pharmaceutical Sciences

Undergraduate Programs



Bachelor's/Master's Integrated Program

UTokyo College of Design (to be launched in September 2027) **EN**

Graduate Programs

Law and Politics
Medicine **EN**
Engineering **EN**
Humanities and Sociology
Science **EN**
Agricultural and Life Sciences **EN**
Economics **EN**
Arts and Sciences **EN**

Education
Pharmaceutical Sciences
Mathematical Sciences
Frontier Sciences **EN**
Information Science and Technology
Interdisciplinary Information Studies **EN**
Public Policy **EN**

Graduate Programs



EN Includes degree programs in English

■ Campus Information

The University of Tokyo has three main campuses: the Hongo and Komaba Campuses in Tokyo and the Kashiwa Campus in neighboring Chiba Prefecture. Most regular undergraduates spend their first two years in the Junior Division at Komaba and their last two years in the Senior Division at Hongo, though Senior Division students in some departments study at Komaba. Graduate students can be based at Komaba, Hongo, or Kashiwa. Please check with the relevant department or website for details.

Undergraduate Degree Programs

■ Programs Offered in English

Global Science Course (GSC)



GSC is an all-English transfer program for second-year and later undergraduate students from universities outside Japan. Under GSC, selected students are accepted into the third year of undergraduate studies in the Department of Chemistry in the Faculty of Science. Upon fulfilling all graduation requirements, GSC students are awarded a Bachelor of Science degree from UTokyo.

GSC transfer students receive:

- a monthly scholarship of ¥150,000
- UTokyo accommodations with fully supported monthly rent
- support from student tutors and TAs

Details



■ Undergraduate Programs Taught in Japanese

日本語による学部教育課程

There are two processes for admission to the regular undergraduate program at UTokyo. One is the General Screening Test for students who graduated from high schools in Japan, and the other is the Special Screening Test for students who graduated from high schools abroad. As the majority of courses in the regular undergraduate program are taught in Japanese, a high level of language proficiency is required at the time of enrollment.

東京大学の学部プログラムに入学するには、2つの方法があります。1つは、日本の高等学校を卒業した学生を対象とした一般選抜、もう1つは、日本国外の高等学校を卒業した学生を対象とした外国学校卒業学生特別選考です。学部課程の授業の多くは、日本語で行われますので、入学の時点で十分な日本語能力を有している必要があります。

Details



Bachelor's/Master's Integrated Program

UTokyo College of Design (UTokyo Design)

To be launched in September 2027 (pending government approval)



See the World
Through Design.
Then Change It

UTokyo College of Design is an innovative integrated five-year Bachelor's/Master's program. This new college will bring together academic knowledge from diverse fields, integrate them using design approaches, tackle complex social issues, and empower a new generation who can bring about a positive impact in the world. The concept of design here encompasses not only the shaping of industrial products and artistic design as is commonly understood, but also the creation of new values, systems, and creative processes for solving social issues.

All courses will be taught in English, and students will construct their own learning pathways following their own interests, unconstrained by and transcending conventional disciplines. In addition, students will deepen their learning and practical experience in real-world contexts through long-term internships in Japan or overseas.

Features of UTokyo College of Design

- ✓ 100 students/year with diverse backgrounds from Japan and abroad
- ✓ Conducted fully in English
- ✓ Fully residential for first-year students
- ✓ Active/project-based learning
- ✓ Student-centered education, with academic advisors providing student support
- ✓ Studio-based learning and open spaces for dialogue with others

Ideal Candidate Profile

A successful candidate should demonstrate the following qualities:

- Intelligence and learning ability
- Effective communication skills and English language proficiency
- Logical and creative thinking skills
- A sense of responsibility, social justice, and inclusivity
- Ability to work independently and collaboratively

This plan is still under development, and its details are subject to change.



UTokyo Design
Website



Instagram



Graduate Degree Programs

■ Programs Offered in English

Graduate School / Program	Degree and Intake	Field of Study/Keyword
Medicine		
Global Health Sciences: Program in International Health	M Apr D Apr/Oct	Global health leadership, life sciences × social sciences, translational public health
Engineering		
International Graduate Program in the Field of Civil Engineering and Infrastructure Studies	M Apr/Oct D Apr/Oct	Infrastructure technologies, natural disaster risk management, international infrastructure projects
International Multidisciplinary Engineering Graduate Program	M Apr/Oct D Apr/Oct	Mechanical engineering, electrical engineering and information systems, materials engineering, aeronautics and astronautics, chemical system engineering, precision engineering, bioengineering, English program for non-Japanese with scholarship and direct entry to postgraduate degree program
Graduate Programs for International Students in Urban and Environmental Studies	M Oct D Oct	Urban planning, urban environmental engineering, sustainable cities
Special Graduate Program in Resilience Engineering (Systems Innovation Course)	M Apr/Oct D Apr/Oct	Resilience engineering, system thinking, integration of engineering knowledge
Special Graduate Program in Resilience Engineering (Nuclear Engineering and Management Course)	M Apr/Oct D Apr/Oct	Resilience engineering, interdisciplinarity, sustainable society
International Bioengineering Course in Master's Global 30 Program (G30-IBP)	M Oct	Mechanobioengineering, bioelectronics, chemical bioengineering
Architecture and Urban Design Course in Master's Global 30 Program (G30-UDA)	M Oct	Architecture and urban design, interdisciplinary design research, emerging built environments
International Technology Management Course in the Department of Technology Management for Innovation in Master's Global 30 Program (G30-TMI)	M Oct	Innovation management, technology management, project-based training
International Graduate Program in Chemistry and Biotechnology	M Apr/Oct D Apr/Oct	Chemistry and biotechnology, organic chemistry and life science, molecule
Science		
Graduate Program for International Students	M Apr/Oct D Apr/Oct	Physics, astronomy, Earth and planetary science, chemistry, biological sciences
Global Science Graduate Course (GSGC)	M Oct D Oct	Physics, astronomy, Earth and planetary science, chemistry, biological sciences
Agricultural and Life Sciences		
International Program in Agricultural Development Studies (IPADS)	M Oct D Oct	Issue orientation, transdisciplinarity, global scope



M Master's degree **D** Doctoral degree **P** Professional degree

Graduate School / Program	Degree and Intake	Field of Study/Keyword
Economics		
Department of Economics at Division of Economics	M Apr/Oct D Apr/Oct	Macroeconomics, microeconomics, econometrics
Arts and Sciences		
Graduate Program on Global Society (GSP)	M Sep D Sep	Area studies, cultural studies, language and literature studies, social and international studies
Graduate Program on Environmental Sciences (GPES)	M Apr/Sep D Apr/Sep	Interdisciplinary (natural science, social science, and humanities) Global (global scale problems) Holistic (holistic view of how environmental systems, human society, and technology interact)
Frontier Sciences		
Environmental Studies Program-Asian Development Bank (ADB) Japan Scholarship Program	M Oct	Environmental studies, international studies, sustainability
Graduate Program in Sustainability Science (GPSS)	M Apr/Oct D Apr/Oct	Sustainability science, transdisciplinarity, inclusive society
Interdisciplinary Information Studies		
Information, Technology, and Society in Asia (ITASIA)	M Oct D Oct	Information technology, Asia, transdisciplinarity
Public Policy		
Master of Public Policy, International Program (MPP/IP)	P Apr/Sep	Economic policy, finance and development, public management, international relations
Department of International Public Policy	D Apr/Sep	International security, international finance and development, science and technology policy



■ Programs Offered in Japanese

UTokyo has a total of 15 graduate schools, all of which accept international students and conduct their entrance examinations independently. For details on special admission for international students, please contact the relevant graduate school.

Graduate School / Department / Course / Program	Degree
Law and Politics	
Positive Law, Comparative, Historical and Theoretical Studies of Law, Political Science, School of Law	M D P
Medicine	
Molecular Cell Biology, Functional Biology, Pathology, Immunology and Microbiology, Radiology and Biomedical, Engineering, Neuroscience, Social Medicine, Internal Medicine, Reproductive, Developmental and Aging Sciences, Surgical Sciences, Health Sciences and Nursing, Medical Science, School of Public Health (professional degree program)	M D P
Engineering (Most courses suitable for English instruction will be conducted in English.)	
Civil Engineering, Architecture, Urban Engineering, Mechanical Engineering, Precision Engineering, Systems Innovation, Aeronautics and Astronautics, Electrical Engineering and Information Systems, Applied Physics, Materials Engineering, Applied Chemistry, Chemical System Engineering, Chemistry and Biotechnology, Advanced Interdisciplinary Studies, Nuclear Engineering and Management, Bioengineering, Technology Management for Innovation, Nuclear Professional School	M D P
Humanities and Sociology	
General Culture, Japanese Studies, Asian Studies, European and American Studies, Socio-cultural Studies, Cultural Resources Studies, Korean Studies	M D
Science	
Physics, Astronomy, Earth and Planetary Science, Chemistry, Biological Sciences	M D
Agricultural and Life Sciences	
Agricultural and Environmental Biology, Applied Biological Chemistry, Biotechnology, Forest Science, Aquatic Bioscience, Agricultural and Resource Economics, Biological and Environmental Engineering, Biomaterial Sciences, Global Agricultural Sciences, Ecosystem Studies, Animal Resource Sciences, Veterinary Medical Sciences	M D
Economics	
Economics, Statistics, Area Studies, Economic History, Management, Quantitative Finance	M D
Arts and Sciences	
Language and Information Sciences, Interdisciplinary Cultural Studies, Area Studies, Advanced Social and International Studies, Multidisciplinary Sciences, Graduate Program on Human Security, Integrated Human Sciences Program for Cultural Diversity	M D
Education	
Integrated Educational Sciences, Advanced Research in School Education	M D
Pharmaceutical Sciences	
Pharmaceutical Sciences, Pharmacy	M D

Details



M Master's degree **D** Doctoral degree **P** Professional degree

Graduate School / Department / Course / Program	Degree
Mathematical Sciences	
Mathematical Sciences	M D
Frontier Sciences	
Advanced Materials Science, Advanced Energy, Complexity Science and Engineering, Integrated Biosciences, Computational Biology and Medical Sciences, Natural Environmental Studies, Ocean Technology, Policy, and Environment, Environment Systems, Human and Engineered Environmental Studies, Socio-Cultural Environmental Studies, International Studies, Graduate Program in Sustainability Science	M D
Information Science and Technology	
Computer Science, Mathematical Informatics, Information Physics and Computing, Information and Communication Engineering, Mechano-Informatics, Creative Informatics	M D
Interdisciplinary Information Studies	
Interdisciplinary Information Studies	M D
Public Policy	
Legal Policy, Public Management, International Public Policy, Economic Policy	P
Master of Public Policy, International Program (MPP/IP)	P
International Public Policy	D



Exchange Programs with Partner Universities

■ University-wide Student Exchange Program (USTEP)



USTEP offers Type U (undergraduate) and Type G (graduate) programs for students from partner universities at UTokyo. Under the exchange program, students pay tuition fees to their home universities and are exempt from paying examination, admission, and tuition fees to UTokyo. For more details and a list of partner universities, please visit the USTEP website.

Details



Student Voices



“ I was inspired by the high academic standards, supportive faculty, and diverse international community at UTokyo. Living in Tokyo allowed me to grow both academically and personally, while gaining a deeper understanding of Japanese culture, daily life, and perspectives through interactions with local and international students. ”



©The University of Tokyo

Global Liberal Arts Courses (GLA Courses)

Global Liberal Arts is a collective term for courses offered by the Center for Global Education (GlobeE). As a university-wide platform for international education, GlobeE offers courses taught in English and other languages (Russian, Korean, Chinese, German, French, and Spanish), in which domestic and international students engage in active learning on campus and online.

Details



- Global Liberal Arts (GLA)
- Language-Global Liberal Arts (L-GLA)
- Global Leadership Courses (GLC)

These Global Liberal Arts courses are open to all students from all faculties and graduate schools, as well as exchange students.

Student Voices



“

I enjoyed the small class size because it helped me get to know others very quickly. The frequent discussion sessions in class ended up being a very productive way of learning and cultural exchange!

”

■ Departmental-level Student Exchange Programs

In addition to USTEP, various departmental-level student exchange programs are offered by faculties and graduate schools at UTokyo. For details, please contact the office responsible for student exchanges at your home university.



Short-term and Summer Programs

■ ESEP-General

U M 6 weeks June-August Scholarships

ESEP-General is a research program for fields including civil, urban, mechanical, electrical, materials, chemical systems, bio, and precision engineering, as well as architecture, systems innovation, and aeronautics and astronautics. The fields may change from year to year.

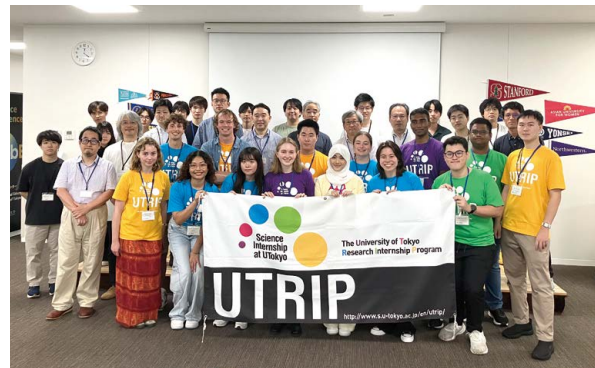
Details



■ UTRIP

U 6 weeks June-August Scholarships

UTRIP is a research internship program for undergraduate students with a keen interest in pursuing a postgraduate degree in the natural sciences, including physics, astronomy, earth and planetary science, chemistry, and biological sciences.



■ UTSIP Kashiwa

U 7 weeks May-July Scholarships

UTSIP Kashiwa is research internship program for undergraduate students considering graduate study in the natural and social sciences. Participants have the opportunity to learn cutting-edge research methods and experience graduate student life.

■ GSFS Global Research and Innovation Short Program (GSFS-GRIS)

U 30-90 days

GSFS-GRIS is a research internship program that allows undergraduates to experience cutting-edge research while being affiliated with laboratories in the Graduate School of Frontier Sciences.

■ UTokyo Amgen Scholars Program

U 8 weeks June-August Scholarships

The UTokyo Amgen Scholars Program is a research internship program for undergraduates considering careers as scientists in the biological sciences, biotechnology, and the pharmaceutical sciences. It offers in-depth academic experience and a chance to form long-lasting global networks with cutting-edge scientists. Expenses such as airfare, accommodations, and living allowances are covered by the program.



■ UTokyo Global Unit Courses

U M 1-2 weeks June-July

The UTokyo Global Unit Courses (UTokyo GUC) are a short-term, intensive summer program organized by UTokyo's Center for Global Education. Designed primarily for university students from throughout the world, UTokyo GUC offers a unique opportunity to study at Japan's leading academic institution.

All courses are taught by University of Tokyo faculty, with additional contributions from distinguished former faculty, and are conducted entirely in English. The program spans approximately six weeks in June and July and is divided into three terms, each lasting two weeks. Students can choose to apply for one or more courses across different terms, provided the schedules do not overlap.

The program's small class sizes, typically around 20 students, allow for a personalized and engaging learning experience. Enrollment in each course is selective, with participants chosen through a screening process to maintain high academic standards.

Upon successful completion of their courses, students will receive a Global Unit Certificate for each course, which includes a grade and the number of Global Units earned. These units may be eligible for credit transfer, depending on the policies of the student's home institution.



GUC offers many new courses on various topics and schedules. Please check the website for more details.

Details



Student Voices



“The class atmosphere was open and supportive, encouraging everyone to share ideas, ask questions, and collaborate, which made learning active and enjoyable. Additionally, the University of Tokyo campus was beautiful and inspiring, providing a calm academic environment that made studying and exploring each day a pleasure.”



Research Students

Research students conduct research on specific subjects at a UTokyo faculty or graduate school. No degrees or qualifications are awarded after the completion of the research term. Qualifications for acceptance vary depending on the faculty or graduate school. For more information, please contact the faculty or graduate school you are considering applying to.

Details



Tuition

Details



Tuition and Fees

Student Categories		Tuition Fee (Annual)	Admission Fee	Examination Fee
Undergraduate		¥642,960	¥282,000	¥17,000
Graduate (excl. School of Law)	Master's/ Professional	¥535,800	¥282,000	¥30,000 Document-based selection: ¥10,000
	Doctoral	¥520,800		
School of Law		¥804,000	¥282,000	¥30,000
Research Student		¥28,900 per month	¥84,600	¥9,800
Auditing Student		¥14,800 per credit	¥28,200	¥9,800

As of April 2025

Exemptions/Deferred Payment of Admission/Tuition Fees

Students for whom the payment of admission and/or tuition fees is difficult for economic reasons and who are recognized as having outstanding academic capabilities may apply for exemption or deferred payment of fees. Research students and auditing students are not eligible.

Details





Scholarships

Details



■ Japanese Government (MEXT) Scholarships

This government program enables students to study at a Japanese university with a scholarship from the Ministry of Education, Culture, Sports, Science and Technology (MEXT). MEXT scholarship students are exempt from paying examination, admission, and tuition fees. UTokyo accepts MEXT students as either research students or undergraduates. For details, please check the MEXT Application Guidelines for the year you intend to apply.

Embassy recommendation

Students must apply to the embassy or consulate general in their home countries. Since the application process differs by the embassy or consulate general, please inquire directly with the Japanese embassy or consulate general in your country for details.

University recommendation

For this category, UTokyo selects and recommends research students to MEXT as candidates for the scholarship. The application period varies depending on the graduate school. Please contact the relevant office directly.

■ Scholarships for Privately Financed International Students

A variety of scholarships are available for students who wish to study in Japan. Although many of the scholarships are provided by external organizations, some are awarded directly by UTokyo. Some scholarships must be applied for before the student arrives in Japan, while others can be applied for in Japan.



Student Life

■ Residential and Living Costs

UTokyo operates several residence halls that are open to international students. Applications are accepted twice a year, in spring and autumn. About three-quarters of international students at UTokyo live in private rental housing. The Housing Office's website provides helpful advice on how to search for privately leased apartments. It also explains the procedures, customs, and other features of Japan's rental system.

Details



According to the Japan Student Services Organization (JASSO), the average living expenses for students in Tokyo is ¥130,000 per month, excluding the costs of study and research.

Details



■ Japanese Language Courses

The University of Tokyo has two types of Japanese-language education programs: courses offered within individual faculties and graduate schools, and university-wide courses provided by the Japanese Language Education Division of the Center for Global Education. These courses provide a diverse range of Japanese-language learning opportunities tailored to the needs of students throughout the university.

Details





■ On-campus Services for International Students

UTokyo provides a diverse array of support for students to enable them to have a rewarding experience at the University. Support services aimed specifically at international students are available at the Center for Global Education on each campus. For more details, please refer to the International Student Handbook as well as the UTokyo Website for International Students.

Details



■ Extracurricular Activities

UTokyo offers a wide range of extracurricular activities for students, ranging from team and individual sports to voluntary work as well as the student clubs (“circles”) that are common at Japanese universities. There are several International Student Associations at the University that can help new students arriving from overseas. Some of those International Student Associations are listed on the website linked to the right.

Details



■ Career Support

The International Student Support Room in the Center for Global Education collaborates with the University Career Support Office to hold career seminars for international students who are considering careers in Japan. The Center also provides useful information about job hunting in Japan and offers personal career counseling.

Details

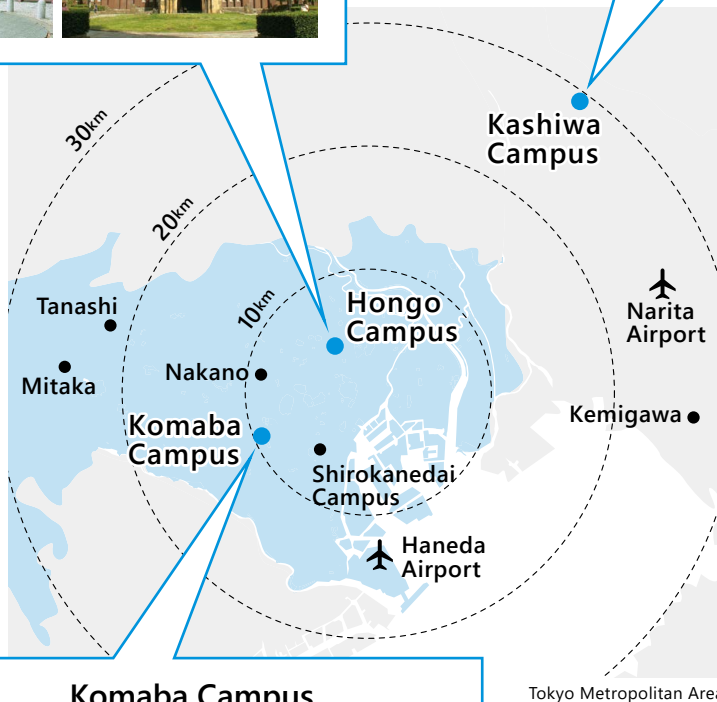


Campus Locations

Hongo Campus



Kashiwa Campus



Komaba Campus



Compiled and published by
International Education Promotion Group
The University of Tokyo

7-3-1 Hongo, Bunkyo-ku Tokyo 113-8654 Japan
www.u-tokyo.ac.jp/en/

We would like to thank everyone who provided photographs for this pamphlet.

